

10' UTILITY EASEMENT

N 88°41'00" E

87.00'

1134

LOT 73

7' UTILITY EASEMENT

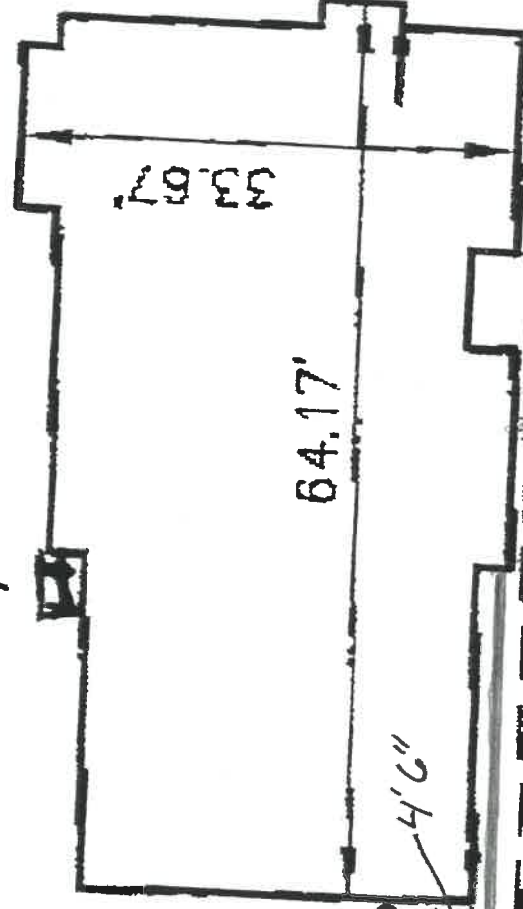
M.P. + 5.00' CND 8/2/00

119.81' S 00°46'00" E

72

Storm Top 4' deep

11.38'



119.81' S 00°46'00" E

11.1'

30' B/L

Sewer Top 7' deep

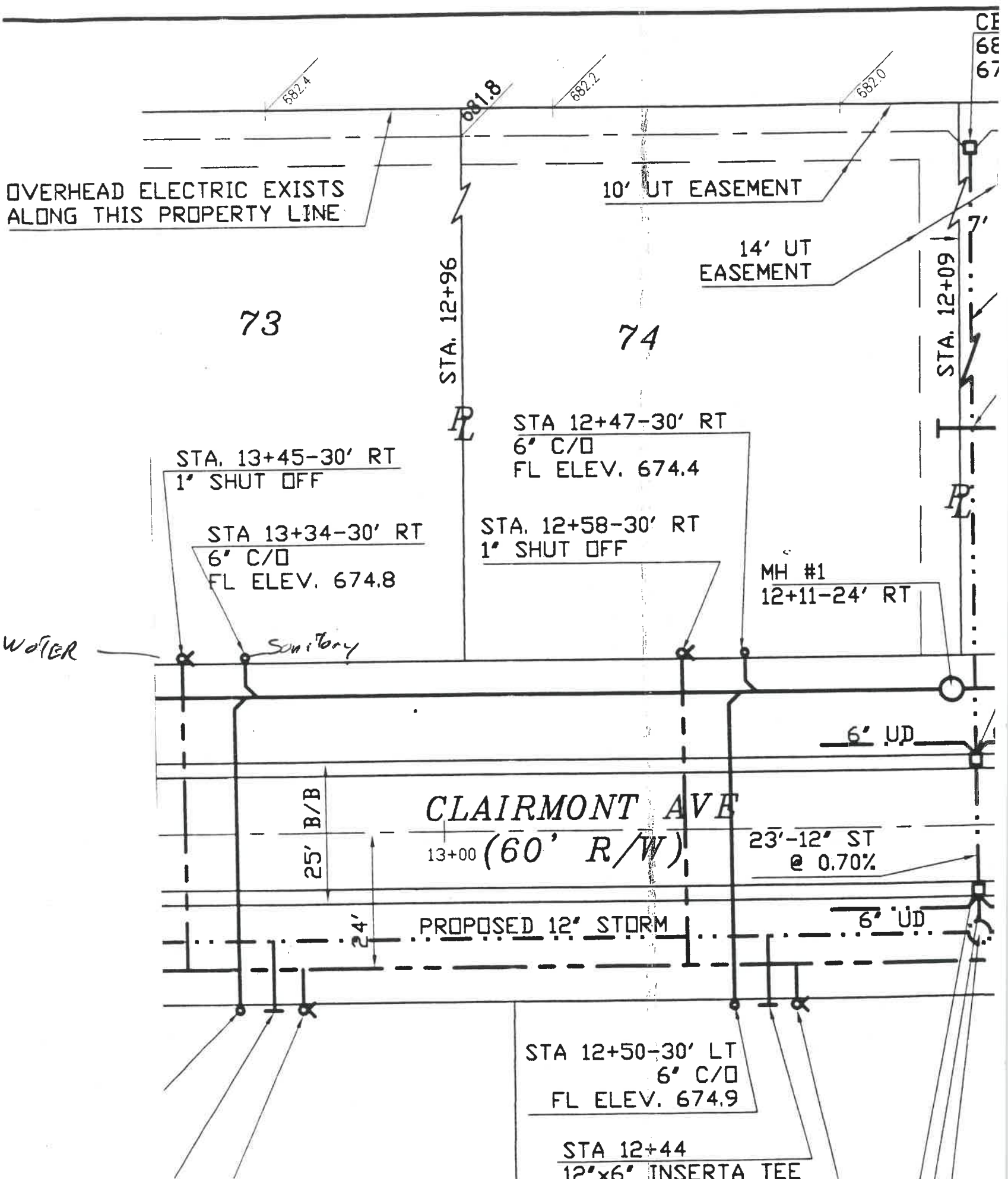
87.00'

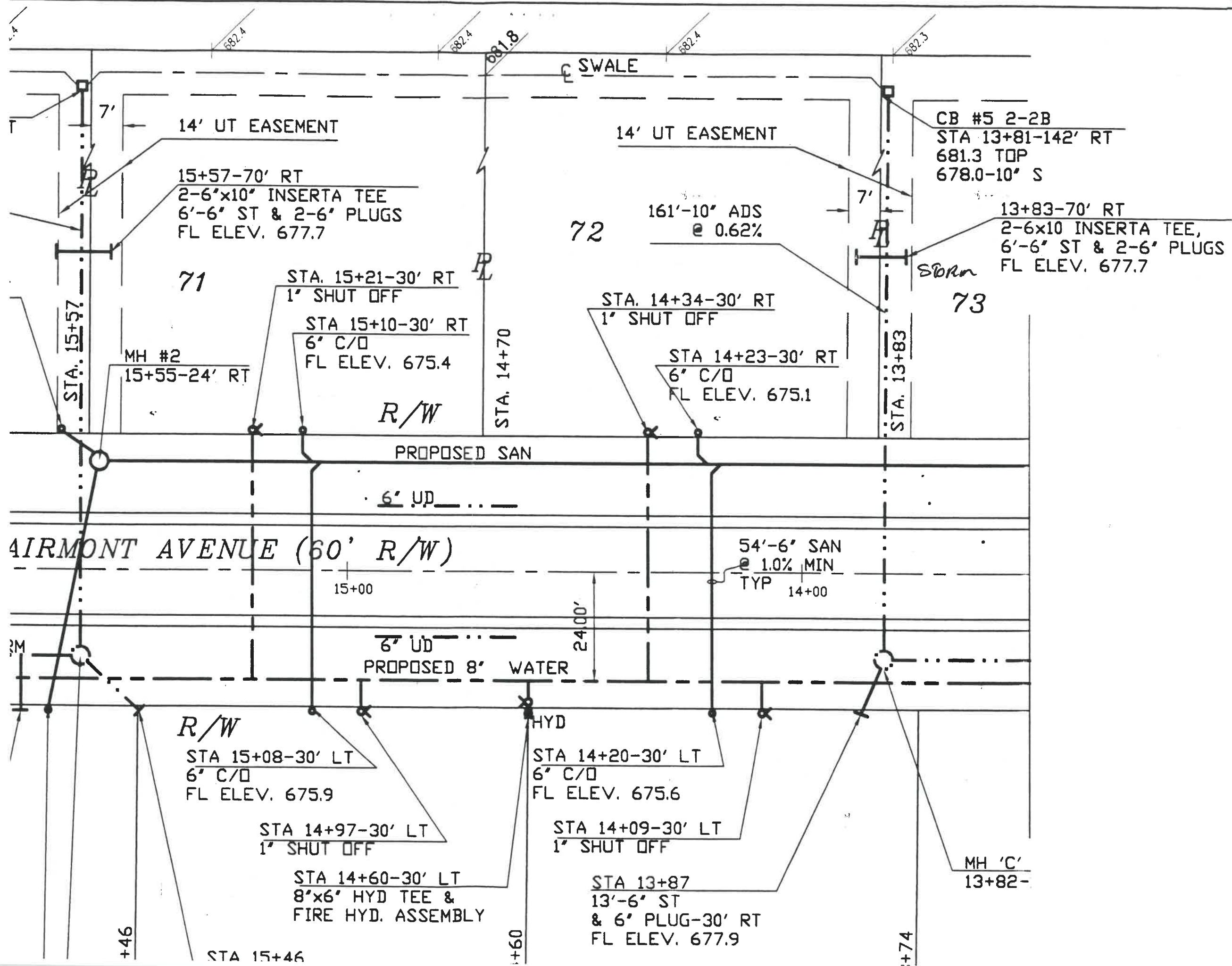
S 88°41'00" W

CLAIRMONT AVENUE  
(AS IT NOW EXISTS)

CL

1134 Clairmont





**AIRMONT AVENUE (60' R/W)**

14' UT EASEMENT

14' UT EASEMENT

15+57-70' RT  
2-6"x10" INSERTA TEE  
6'-6" ST & 2-6" PLUGS  
FL ELEV. 677.7

CB #5 2-2B  
STA 13+81-142' RT  
681.3 TOP  
678.0-10' S

13+83-70' RT  
2-6x10 INSERTA TEE,  
6'-6" ST & 2-6" PLUGS  
FL ELEV. 677.7

161'-10" ADS  
@ 0.62%

71

72

73

STA. 15+21-30' RT  
1" SHUT OFF

STA. 14+34-30' RT  
1" SHUT OFF

MH #2  
15+55-24' RT

STA 15+10-30' RT  
6" C/D  
FL ELEV. 675.4

STA 14+23-30' RT  
6" C/D  
FL ELEV. 675.1

R/W

STA. 14+70

STA. 13+83

PROPOSED SAN

6" UD

54'-6" SAN  
@ 1.0% MIN  
TYP

6" UD  
PROPOSED 8" WATER

R/W

HYD

STA 15+08-30' LT  
6" C/D  
FL ELEV. 675.9

STA 14+20-30' LT  
6" C/D  
FL ELEV. 675.6

STA 14+97-30' LT  
1" SHUT OFF

STA 14+09-30' LT  
1" SHUT OFF

STA 14+60-30' LT  
8"x6" HYD TEE &  
FIRE HYD. ASSEMBLY

STA 13+87  
13'-6" ST  
& 6" PLUG-30' RT  
FL ELEV. 677.9

MH 'C'  
13+82-

+46

STA 15+46

+60

+74